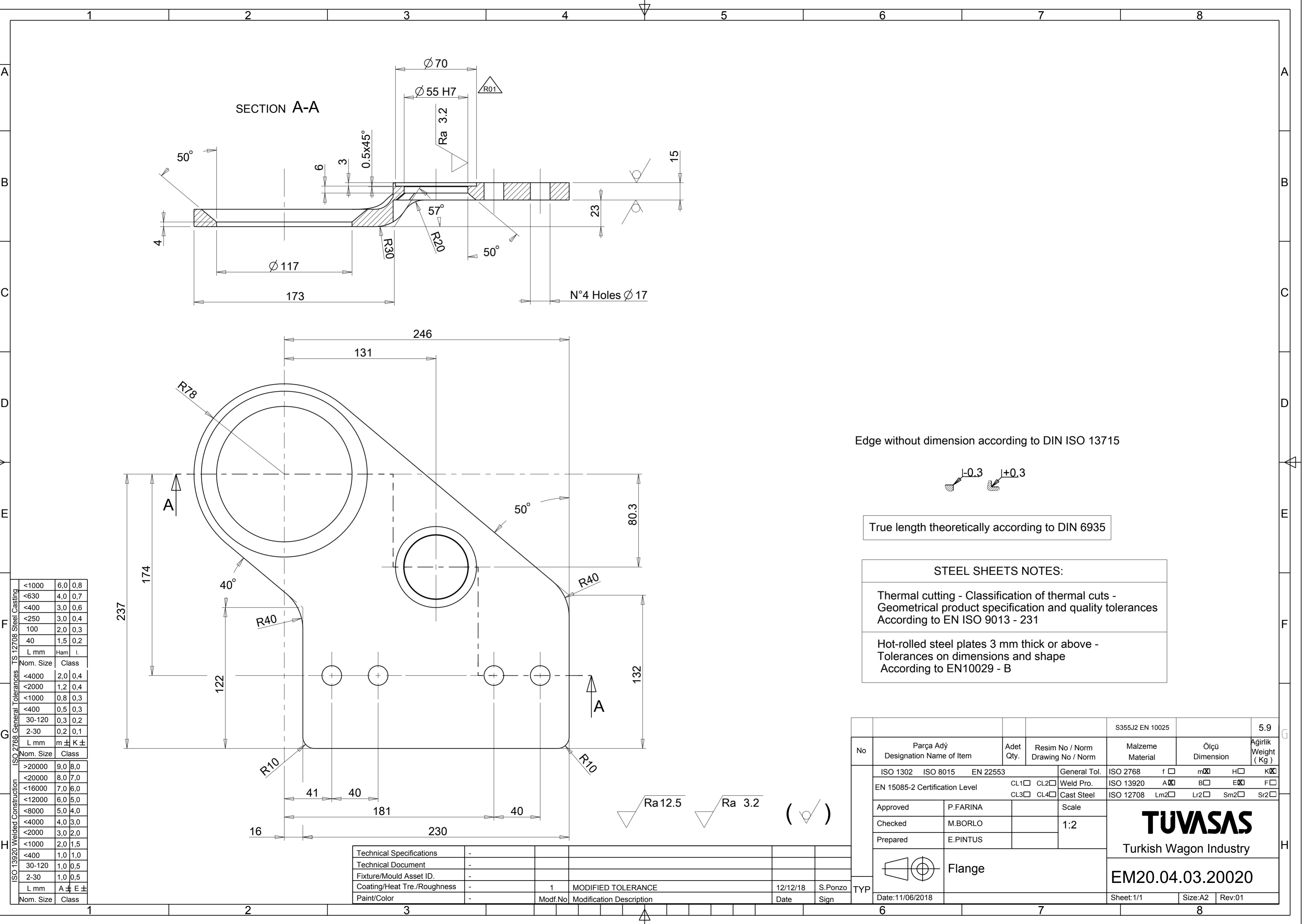
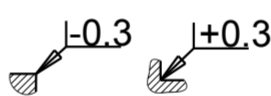


Reproduction, dissemination or use of this document or its all contents in any form without the prior written permission of TÜVASAS, is prohibited. Offenders will be liable for the payment of damages. All rights reserved in the event of the grant of a patent, utility model or commercial design registration.



Edge without dimension according to DIN ISO 13715



True length theoretically according to DIN 6935


STEEL SHEETS NOTES:

Thermal cutting - Classification of thermal cuts -
Geometrical product specification and quality tolerances
According to EN ISO 9013 - 231

Hot-rolled steel plates 3 mm thick or above -
Tolerances on dimensions and shape
According to EN10029 - B

	<1000	6.0	0.8
	<630	4.0	0.7
	<400	3.0	0.6
	<250	3.0	0.4
	100	2.0	0.3
	40	1.5	0.2
	L mm	Ham	L
Nom. Size	Class		
	<4000	2.0	0.4
	<2000	1.2	0.4
	<1000	0.8	0.3
	<400	0.5	0.3
	30-120	0.3	0.2
	2-30	0.2	0.1
	L mm	m ±	K ±
Nom. Size	Class		
	>20000	9.0	8.0
	<20000	8.0	7.0
	<16000	7.0	6.0
	<12000	6.0	5.0
	<8000	5.0	4.0
	<4000	4.0	3.0
	<2000	3.0	2.0
	<1000	2.0	1.5
	<400	1.0	1.0
	30-120	1.0	0.5
	2-30	1.0	0.5
	L mm	A ±	E ±
Nom. Size	Class		

Technical Specifications	-				
Technical Document	-				
Fixture/Mould Asset ID.	-				
Coating/Heat Tre./Roughness	-	1	MODIFIED TOLERANCE	12/12/18	S.Ponzo
Paint/Color	-	Modf.No	Modification Description	Date	Sign

				S355J2 EN 10025			5.9			
No	Parça Adý Designation Name of Item	Adet Qty.	Resim No / Norm Drawing No / Norm	Malzeme Material	Ölçü Dimension	Ağırlık Weight (Kg)				
TYP	ISO 1302 ISO 8015 EN 22553			General Tol.	ISO 2768	f <input type="checkbox"/>	m <input checked="" type="checkbox"/>	H <input type="checkbox"/>	K <input checked="" type="checkbox"/>	
	EN 15085-2 Certification Level			CL1 <input type="checkbox"/> CL2 <input type="checkbox"/>	Weld Pro.	ISO 13920	A <input checked="" type="checkbox"/>	B <input type="checkbox"/>	E <input checked="" type="checkbox"/>	F <input type="checkbox"/>
				CL3 <input type="checkbox"/> CL4 <input type="checkbox"/>	Cast Steel	ISO 12708	Lm2 <input type="checkbox"/>	Lr2 <input type="checkbox"/>	Sm2 <input type="checkbox"/>	Sr2 <input type="checkbox"/>
	Approved	P.FARINA		Scale	<div>TUVASAS</div> <div>Turkish Wagon Industry</div>					
	Checked	M.BORLO		1:2						
	Prepared	E.PINTUS								
		Flange			EM20.04.03.20020					
Date:11/06/2018				Sheet:1/1		Size:A2	Rev:01			